

Downtown Commercial Building

327 N Platte Avenue
York, Nebraska 68467
www.cbre.com/nebraska

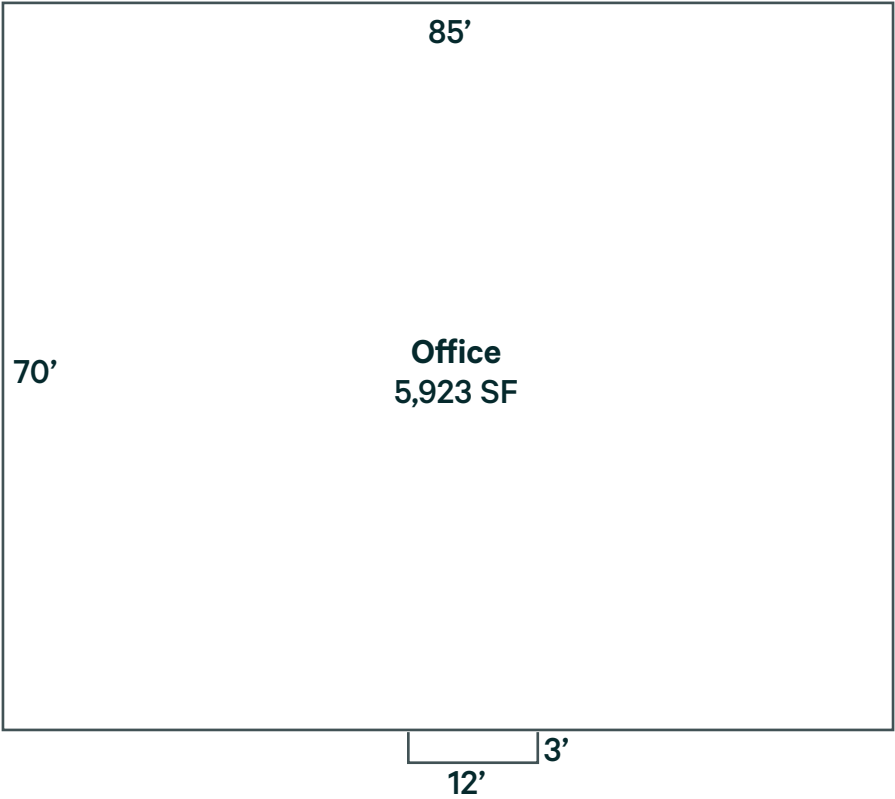


Property Information

Sale Price	\$384,995
Building Size	5,923 SF
Lot Size	0.35 AC
Years Built	1965

Features

- + Ideally situated in downtown York, near amenities
- + All-brick one-story building sits on a corner lot
- + Great owner/user opportunity
- + Property features street parking and ample rear lot parking.
- + One drive-in door

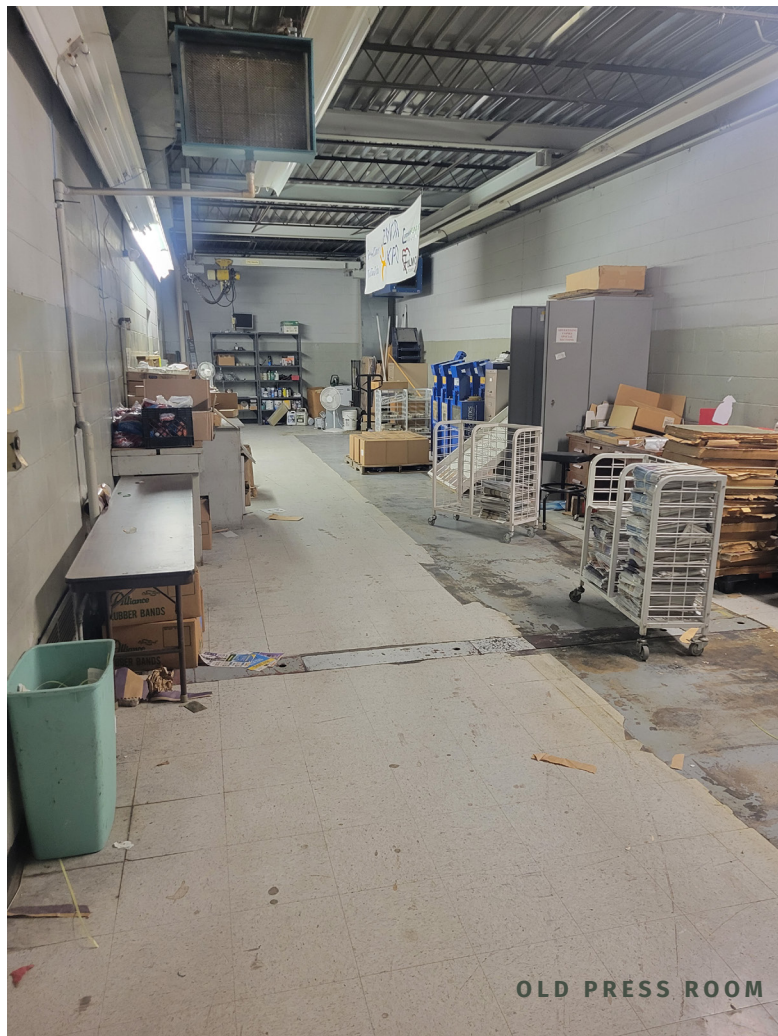


Property Information			
Address	327 N Platte Avenue, York, Nebraska 68467	Floors	One
County	York	Drive-in Doors	One
Parcel Number	930014928	Dock-high Doors	None
Class	Commercial	HVAC	Throughout
Lot Size	0.35 AC / 15,246 SF	Sprinklered	Warehouse
Building Size	5,923 SF	Zoning	General Commercial (GC)
Year Built	1965		

Commercial Building - Flex

327 N Platte Avenue | York, Nebraska 68467

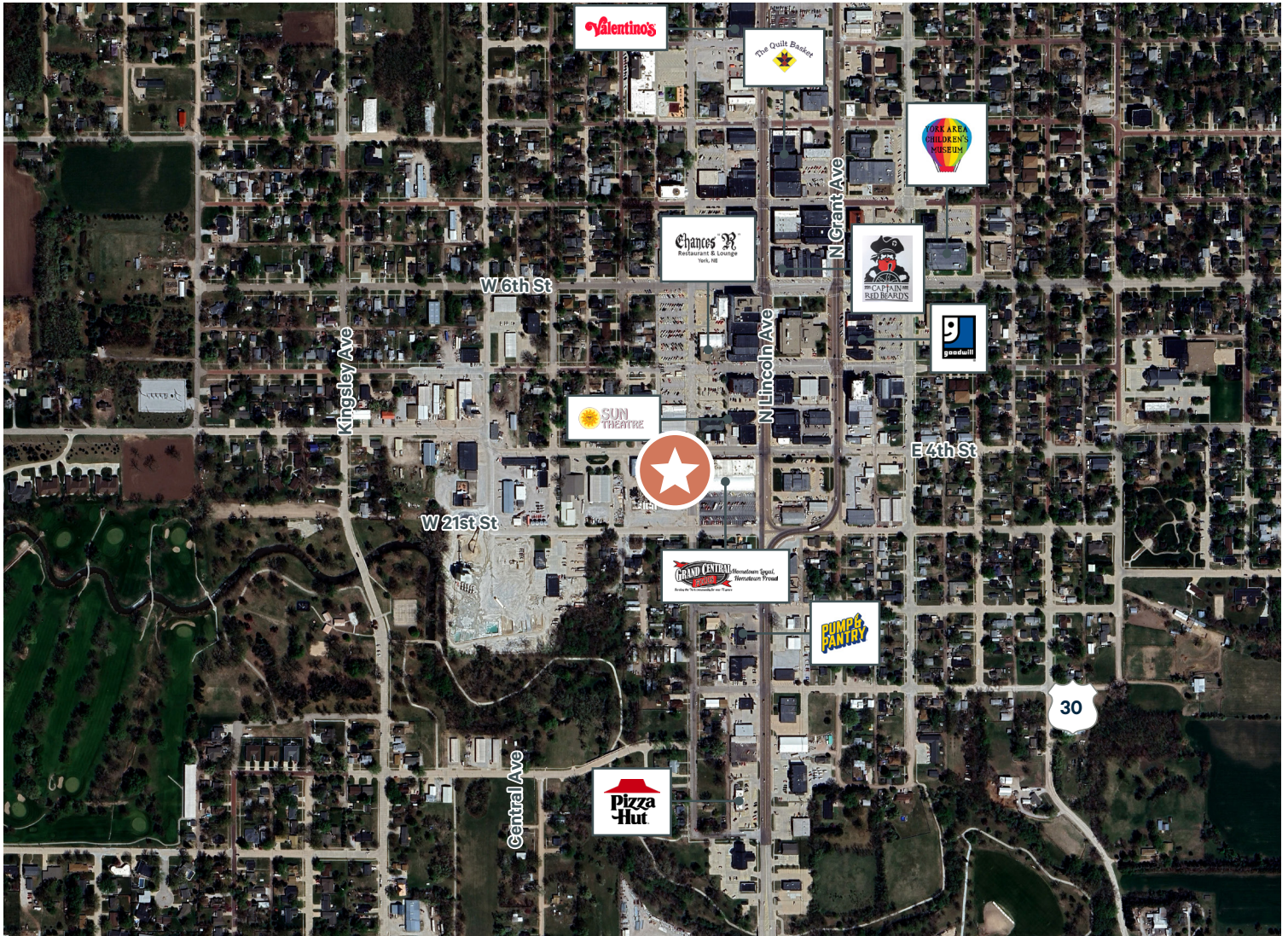
For Sale



Commercial Building - Flex

327 N Platte Avenue | York, Nebraska 68467

For Sale



Contact Us

Pete Meginnis

Associate

+1 402 697 5818

pete.meginnis@cbre.com

© 2024 CBRE, Inc. All rights reserved. This information has been obtained from sources believed reliable but has not been verified for accuracy or completeness. CBRE, Inc. makes no guarantee, representation or warranty and accepts no responsibility or liability as to the accuracy, completeness, or reliability of the information contained herein. You should conduct a careful, independent investigation of the property and verify all information. Any reliance on this information is solely at your own risk. CBRE and the CBRE logo are service marks of CBRE, Inc. All other marks displayed on this document are the property of their respective owners, and the use of such marks does not imply any affiliation with or endorsement of CBRE. Photos herein are the property of their respective owners. Use of these images without the express written consent of the owner is prohibited. 083024q

www.cbre.com/nebraska

CBRE