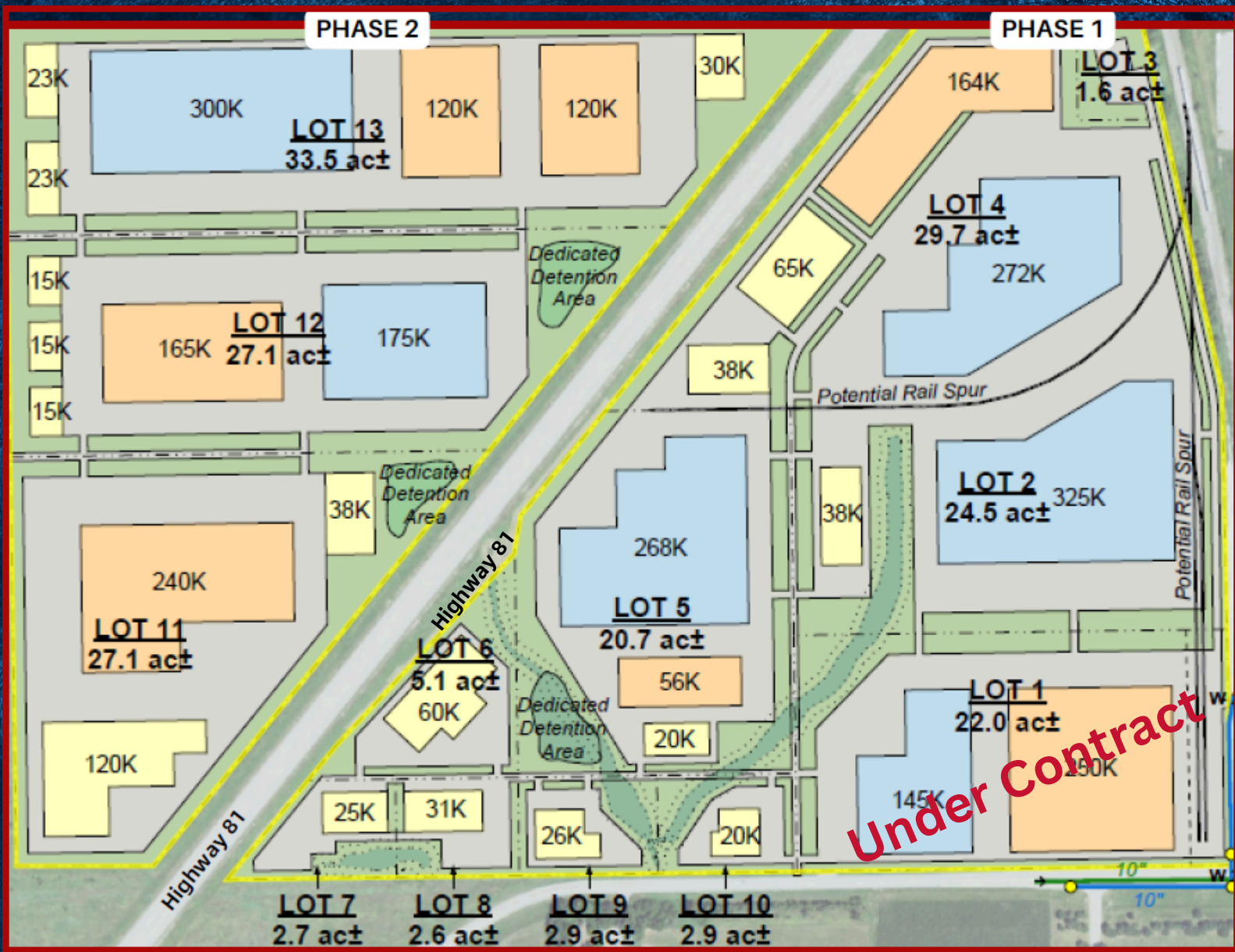




York County
Development
Corporation
COMING TOGETHER TO GROW



200 Acre Industrial Park

CONTACT: Lisa Hurley | lhurley@yorkdevco.com

NORTHWEST YORK INDUSTRIAL PARK



Latitude: 40.889731 | Longitude: -97.604288

PID: 930099818

- ✓ Possible Rail Access
- ✓ Highway Access within 0.4 Miles
- ✓ Interstate Access within 5 Miles
- ✓ TIF District
- ✓ PACE District

UTILITIES

Electric Distribution: Nebraska Public Power District

Natural Gas Distribution: Black Hills Energy

Water: City of York

Sewer: City of York

TRANSPORTATION

Nearest Interstate: I-80 (5 Miles)

Nearest Highway: US Highway 81 (Adjacent)

Nearest Airport: York Municipal Airport (Adjacent)

Nearest Commercial Airport: Lincoln Municipal Airport (LNK) (52 Miles)

Rail Served: BNSF Railway - Access is Possible

CONTACT

LISA HURLEY, EXECUTIVE DIRECTOR

York County Development Corporation

601 N Lincoln Ave York, NE 68467

402-362-3333

lhurley@yorkdevco.com

www.yorkdevco.com



York County
Development
Corporation

COMING TOGETHER TO GROW